

U.S. POSTAL CARDS

POSTAL CARDS

Preprinted = Preprinted with address or message on front and/or back.

1873-1898 ISSUES

| Scott No. | Description | Preprinted | Mint |
|-----------|---|------------|--------|
| UX1 | 1c Liberty, Brown, Large Watermark. | 85.00 | 425.00 |
| UX3 | 1c Liberty, Brown, Small Watermark. | 25.00 | 100.00 |
| UX4 | 1c Liberty, Black, "Write", Watermark (1875).... | 800.00 | .. |
| UX5 | 1c Liberty, Black, "Write the Address", Unwtmk. | 9.50 | 90.00 |
| UX6 | 2c Liberty, Brown, Buff (1879)..... | 15.00 | 40.00 |
| UX7 | 1c Liberty, Black "Nothing But Address" (1881).... | 8.50 | 87.50 |
| UX8 | 1c Thomas Jefferson, Brown (1885) | 12.50 | 60.00 |
| UX9 | 1c Thomas Jefferson, Black (1886) | 2.25 | 27.50 |
| UX10 | 1c Ulysses S. Grant, Black (1891) | 9.00 | 55.00 |
| UX11 | 1c Ulysses S. Grant, Blue | 5.00 | 25.00 |
| UX12 | 1c T. Jefferson, Black, Small wreath (1894) | 2.75 | 55.00 |
| UX13 | 2c Liberty, Blue, Cream (1897) | 95.00 | 275.00 |
| UX14 | 1c Thomas Jefferson, Black, Large wreath | 3.25 | 45.00 |
| UX15 | 1c John Adams, Black (1898) | 15.00 | 57.50 |
| UX16 | 2c Liberty, Black "No Frame"..... | 6.25 | 16.50 |

1902-18 ISSUES

| | | | |
|------|---|-------|--------|
| UX18 | 1c William McKinley, Oval | 2.25 | 21.50 |
| UX19 | 1c William McKinley, Circle(1907)..... | 2.75 | 55.00 |
| UX20 | 1c McKinley, Correspondence space at left | 11.00 | 70.00 |
| UX21 | 1c William McKinley, Shaded (1910) | 22.50 | 130.00 |
| UX22 | 1c William McKinley, White background..... | 2.50 | 25.00 |



| | | | |
|------|--------------------------------------|------|-------|
| UX23 | 1c Abraham Lincoln, Red (1911) | 3.75 | 11.75 |
| UX24 | 1c William McKinley, Red..... | 1.50 | 12.50 |



| | | | |
|------|--|------|-------|
| UX25 | 2c Ulysses S. Grant, Red | .80 | 2.00 |
| UX26 | 1c Abraham Lincoln, Green (1913) | 3.00 | 15.00 |
| UX27 | 1c Thomas Jefferson, Die 1 (1914)..... | .30 | .40 |
| UX28 | 1c Abraham Lincoln, green (1917)..... | .40 | .80 |
| UX29 | 2c Thomas Jefferson, Die 1 | 8.50 | 50.00 |
| UX30 | 2c Thomas Jefferson, Die 2 (1918)..... | 5.50 | 35.00 |

1920-26 ISSUES

| | | | |
|------|--|--------|--------|
| UX32 | 1c on 2c T. Jefferson, Red, Die 1 (UX29)..... | 20.00 | 67.50 |
| UX33 | 1c on 2c T. Jefferson, Red, Die 2 (UX30)..... | 3.75 | 21.50 |
| UX34 | 1c on 2c Red, Die 1, Press Printing (UX29) | 140.00 | 825.00 |
| UX35 | 1c on 2c Red, Die 2, Press Printing (UX30) | 60.00 | 250.00 |
| UX37 | 3c William McKinley (1926)..... | 2.25 | 5.25 |

1951-52 ISSUES

| | | | |
|------|---|------|------|
| UX38 | 2c Benjamin Franklin | .30 | .50 |
| UX39 | 2c on 1c Thomas Jefferson (UX27) (1952) | .35 | .70 |
| UX40 | 2c on 1c Abraham Lincoln (UX28) | .50 | .70 |
| UX41 | 2c on 1c T. Jefferson, dark green (UX27)..... | 2.25 | 5.50 |
| UX42 | 2c on 1c Abraham Lincoln, dark green (UX28) | 3.50 | 6.00 |

1952-61 ISSUES

| Scott No. | Description | Mint Card |
|-----------|--|-----------|
| UX43 | 2c Abraham Lincoln, Carmine | 1.00 |
| UX44 | 2c FIPEX, Liberty Torch (1956)..... | .45 |
| UX45 | 4c Statue of Liberty | 1.65 |
| UX46 | 3c Statue of Liberty | .65 |
| UX46d | 3c Statue of Liberty, Precancelled | 4.75 |
| UX47 | 2c + 1c Benjamin Franklin, Additional Paid | 275.00 |

1962-65 ISSUES

| | | |
|-------|--|------|
| UX48 | 4c Abraham Lincoln, Precancelled..... | .55 |
| UX48a | 4c Abraham Lincoln, Tagged (1966)..... | .65 |
| UX49 | 7c "USA" & Map (1963) | 4.25 |
| UX50 | 4c U.S. Customs Service (1964) | .60 |
| UX51 | 4c Social Security | .55 |
| UX52 | 4c U.S. Coast Guard (1965)..... | .40 |
| UX53 | 4c Bureau of the Census | .45 |

1967-71 ISSUES

| | | |
|------|-------------------------------------|------|
| UX54 | 8c "USA" & Map..... | 5.00 |
| UX55 | 5c Abraham Lincoln (1968) | .45 |
| UX56 | 5c Women Marines..... | .50 |
| UX57 | 5c Weather Services (1970)..... | .45 |
| UX58 | 6c Paul Revere, Patriot (1971)..... | .45 |
| UX59 | 10c "USA" & Map..... | 5.00 |
| UX60 | 6c Hospitals, NY Hospital..... | .35 |

1972-74 ISSUES

| | | |
|------|------------------------------|------|
| UX61 | 6c U.S.F. Constellation..... | 1.00 |
| UX62 | 6c Monument Valley | .55 |
| UX63 | 6c Gloucester, MA | .55 |

| Scott No. | Description | Mint Card |
|-----------------------|---|-----------|
| UX64 | 6c John Hanson, Continental Congress | 50 |
| UX64a | 6c Hanson, Coarse Paper | 2.50 |
| UX65 | 6c Statue of Liberty (1973) | 35 |
| UX66 | 6c Samuel Adams, Patriot | 50 |
| UX67 | 12c Visit USA, Ship's Figurehead (1974) | 45 |
| 1975-78 ISSUES | | |
| UX68 | 7c Charles Thomson, Patriot..... | 40 |
| UX69 | 9c John Witherspoon, Princeton | 40 |
| UX70 | 9c Caesar Rodney, Patriot (1976)..... | 40 |
| UX71 | 9c Federal Court House, Galveston (1977) | 40 |
| UX72 | 9c Nathan Hale, Patriot | 40 |
| UX73 | 10c Cincinnati Music Hall (1978)..... | 40 |
| UX74 | (10c) John Hancock, Patriot | 40 |
| UX75 | 10c John Hancock, Patriot | 40 |
| UX76 | 14c Coast Guard Cutter "Eagle" | 45 |
| UX77 | 10c Molly Pitcher, Monmouth..... | 40 |
| 1979-80 ISSUES | | |
| UX78 | 10c George Rogers Clark, Vincennes | 40 |
| UX79 | 10c Casimir Pulaski, Savannah | 40 |
| UX80 | 10c Moscow Olympics, Sprinter | 65 |
| UX81 | 10c Iolani Palace, Honolulu | 40 |
| UX82 | 14c Lake Placid Olympics (1980)..... | 75 |
| UX83 | 10c Salt Lake Temple..... | 40 |
| UX84 | 10c Landing of Rochambeau | 40 |
| UX85 | 10c Battle of Kings Mountain..... | 40 |
| UX86 | 19c Drake's "Golden Hinde" | 75 |
| 1981-82 ISSUES | | |
| UX87 | 10c Battle of Cowpens..... | 40 |
| UX88 | (12c) Eagle..... | 40 |
| UX89 | 12c Isaiah Thomas, Publisher | 40 |
| UX90 | 12c Nathaniel Greene, Eutaw Springs | 45 |
| UX91 | 12c Lewis & Clark Expedition | 45 |
| UX92 | (13c) Robert Morris, Financier..... | 40 |
| UX93 | 13c Robert Morris, Financier | 40 |
| UX94 | 13c "Swamp Fox" Frances Marion (1982) | 40 |
| UX95 | 13c LaSalle Claims Louisiana | 40 |
| UX96 | 13c Philadelphia Music Academy | 40 |
| UX97 | 13c St. Louis Old Post Office | 40 |
| 1983-84 ISSUES | | |
| UX98 | 13c Landing of Oglethorpe, Georgia | 40 |
| UX99 | 13c Old Post Office, Washington, D.C. | 40 |
| UX100 | 13c Yachting, Olympics'84 | 40 |
| UX101 | 13c Ark and Dove, Maryland (1984) | 40 |
| UX102 | 13c Olympics, Torch and Runner..... | 40 |
| UX103 | 13c Frederic Baraga, Michigan | 40 |
| UX104 | 13c Rancho San Pedro, California..... | 40 |
| 1985-86 ISSUES | | |
| UX105 | (14c) Charles Carroll, Patriot..... | 1.00 |
| UX106 | 14c Charles Carroll, Patriot | 1.85 |
| UX107 | 25c Clipper "Flying Cloud" | 95 |
| UX108 | 14c George Wythe, Judge and Lawyer..... | 45 |
| UX109 | 14c Settling of Connecticut 1636 | 45 |
| UX110 | 14c Stamp Collecting (1986)..... | 45 |
| UX111 | 14c Francis Vigo, Vincennes..... | 45 |
| UX112 | 14c Settling of Rhode Island 1636 | 45 |
| UX113 | 14c Wisconsin Territory 1836..... | 45 |
| UX114 | 14c National Guard Heritage..... | 45 |
| 1987-88 ISSUES | | |
| UX115 | 14c Self-scouring Steel Plow..... | 45 |
| UX116 | 14c Constitutional Convention. | 45 |
| UX117 | 14c U.S. Flag, Stars and Stripes..... | 45 |
| UX118 | 14c Take Pride in America | 70 |
| UX119 | 14c Timberline Lodge, Oregon..... | 45 |
| UX120 | 15c America the Beautiful, Bison and Prairie (1988) | 45 |
| UX121 | 15c Blair House, Washington, DC..... | 70 |
| UX122 | 28c "Yorkshire" Packet Ship | 95 |
| UX123 | 15c Iowa Territory 1838..... | 45 |
| UX124 | 15c Settling of Northwest & Ohio Territory 1788. | 45 |
| UX125 | 15c Hearst Castle, San Simeon | 45 |
| UX126 | 15c Federalist Papers..... | 45 |
| 1989 ISSUES | | |
| UX127 | 15c Beautiful, Sonora Desert, Hawk | 45 |
| UX128 | 15c Healy Hall, Georgetown..... | 45 |
| UX129 | 15c Beautiful, Great Blue Heron, Marsh | 45 |
| UX130 | 15c Settling of Oklahoma 1889 | 45 |
| UX131 | 21c Beautiful, Canada Geese and Mountains | 60 |
| UX132 | 15c Beautiful, Seashore, Lighthouse, Seagull | 45 |
| UX133 | 15c Beautiful, Woodlands, Deer, Waterfall | 45 |
| UX134 | 15c Hull House, Chicago | 45 |
| UX135 | 15c Beautiful, Independence Hall, Philadelphia | 50 |
| UX136 | 15c Beautiful, Baltimore Inner Harbor | 70 |
| UX137 | 15c Beautiful, 59th St. Bridge, New York..... | 50 |
| UX138 | 15c Beautiful, Capitol Building, Washington, DC..... | 50 |
| UX139-42 | 15c Cityscapes, set of 4 postal cards | 15.00 |
| UX142a | 15c Cityscapes, Sheet of 4 cards..... | 17.50 |
| UX143 | 15c The White House | 1.75 |
| UX144 | 15c Jefferson Memorial | 2.00 |
| 1990 ISSUES | | |
| UX145 | 15c Rittenhouse Paper Mill, PA | 45 |
| UX146 | 15c World Literacy Year | 45 |
| UX147 | 15c Fur Traders on Missouri, George Bingham..... | 1.95 |
| UX148 | 15c Isaac Royall House, Medford, MA..... | 45 |
| UX150 | 15c Quadrangle, Stanford University | 65 |
| UX151 | 15c DAR/Constitution Hall, D.C. | 1.90 |
| UX152 | 15c Chicago Orchestra Hall | 50 |



1991 ISSUES

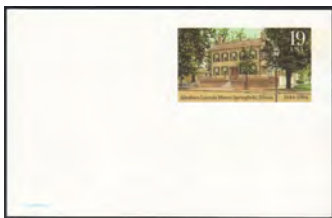
| Scott No. | Description | Mint Card |
|-----------|--|-----------|
| UX153 | 19c Flag | 60 |
| UX154 | 19c Carnegie Hall Centennial | 95 |
| UX155 | 19c Old Red, University of Texas | 75 |
| UX156 | 19c Bill of Rights Ratification | 75 |
| UX157 | 19c Main Building, Notre Dame | 75 |
| UX158 | 30c America the Beautiful, Niagara Falls | 95 |
| UX159 | 19c The Old Mill, University of Vermont | 60 |

1992 ISSUES

| | | |
|-------|---|------|
| UX160 | 19c Wadsworth Atheneum, Hartford, CT | 60 |
| UX161 | 19c Cobb Hall, University of Chicago | 60 |
| UX162 | 19c Waller Hall, Willamette University | 60 |
| UX163 | 19c America's Cup, Yacht | 1.75 |
| UX164 | 19c Columbia River Gorge | 90 |
| UX165 | 19c Great Hall, Ellis Island Immigration Museum | 60 |

1993 ISSUES

| | | |
|-------|--|------|
| UX166 | 19c Washington National Cathedral | 60 |
| UX167 | 19c Wren Building, College of William & Mary | 60 |
| UX168 | 19c Holocaust Memorial Museum, D.C. | 1.75 |
| UX169 | 19c Fort Recovery, Ohio | 60 |
| UX170 | 19c Playmaker's Theater, Univ. of North Carolina | 60 |
| UX171 | 19c O'Kane Hall, Holy Cross College | 60 |
| UX172 | 19c Beecher Hall, Illinois College | 60 |
| UX173 | 19c Massachusetts Hall, Bowdoin College | 60 |



| | | |
|-------|---|----|
| UX174 | 19c Abraham Lincoln Home, Springfield, IL | 60 |
|-------|---|----|

1994 ISSUES

| | | |
|-------|--|----|
| UX175 | 19c Myer's Hall, Wittenberg University | 60 |
| UX176 | 19c Canyon de Chelly, AZ | 70 |
| UX177 | 19c St. Louis Union Station | 70 |



| | | |
|----------|------------------------------|-------|
| UX178-97 | 19c Legends of the West (20) | 29.75 |
|----------|------------------------------|-------|

1995 ISSUES

| | | |
|----------|--------------------------------|-------|
| UX198 | 20c Red Barn, Williamsburg, PA | 60 |
| UX199 | (20c) "G" Old Glory | 3.50 |
| UX200-19 | 20c Civil War (20) | 52.50 |
| UX219A | 50c Bald Eagle | 1.50 |
| UX220 | 20c Clipper Ship | 60 |
| UX221-40 | 20c Comic Strips (20) | 60.00 |

1996 ISSUES

| | | |
|----------|--|-------|
| UX241 | 20c Winter Farm Scene | 60 |
| UX242-61 | 20c Atlanta Olympics (20) | 67.50 |
| UX262 | 20c McDowell Hall, St. John's College | 60 |
| UX263 | 20c Alexander Hall, Princeton University | 60 |
| UX264-78 | 20c Endangered Species (20) | 75.00 |

1997 ISSUES

| | | |
|----------|-------------------------------|-------|
| UX279 | 20c Love-Swans | 4.50 |
| UX279a | Package of 12 | 47.50 |
| UX280 | 20c City College of New York | 60 |
| UX281 | 20c Bugs Bunny | 2.00 |
| UX281a | Bugs Bunny, Booklet of 10 | 18.50 |
| UX282 | 20c Golden Gate Bridge | 60 |
| UX283 | 50c Golden Gate Bridge | 1.50 |
| UX284 | 20c Fort McHenry, Maryland | 75 |
| UX285-89 | 20c Movie Monsters (5) | 11.00 |
| UX289a | Movie Monsters, Booklet of 20 | 43.50 |



1998 ISSUES

| Scott No. | Description | Mint Card |
|-----------|---|-----------|
| UX290 | 20c The Lyceum, University of Mississippi | .60 |
| UX291 | 20c Tweety & Sylvester | 1.85 |
| UX291a | Tweety and Sylvester, Booklet of 10 | 17.75 |
| UX292 | 20c Girard College, Philadelphia | .60 |
| UX293-96 | 20c Tropical Birds(4) | 6.50 |
| UX296a | Tropical Birds, Booklet of 20 | 31.75 |
| UX297 | 20c American Ballet | 1.60 |
| UX297a | Ballet, Booklet of 10 | 15.00 |
| UX298 | 20c Kerr Hall, Northeastern University | .60 |
| UX299 | 20c Usen Castle, Brandeis University | .60 |

1999 ISSUES

| | | |
|----------|---|-------|
| UX300 | 20c Love and Heart | 1.75 |
| UX300a | Love, Booklet of 20 | 34.50 |
| UX301 | 20c Bascom Hall, Wisconsin University | .60 |
| UX302 | 20c Washington & Lee University | .60 |
| UX303 | 20c Redwood Library & Atheneum, Newport, RI | .60 |
| UX304 | 20c Daffy Duck | 1.75 |
| UX304a | Daffy Duck, Booklet of 10 | 16.50 |
| UX305 | 20c Mount Vernon | .90 |
| UX306 | 20c Block Island Lighthouse, RI | .60 |
| UX307-11 | 20c Famous Trains (5) | 8.75 |
| UX311a | Trains, Booklet of 20 | 33.50 |

2000 ISSUES

| | | |
|----------|--|-------|
| UX312 | 20c University of Utah | .60 |
| UX313 | 20c Ryman Auditorium, Nashville | .60 |
| UX314 | 20c Wile E.Coyote & Road Runner | 1.80 |
| UX314a | Wile e.Coyote & Road Runner, Booklet of 10 | 17.75 |
| UX315 | 20c Adoption | 1.80 |
| UX315a | Adoption, Pack of 10 | 17.75 |
| UX316 | 20c Old Stone Row, Middlebury College, VT | .60 |
| UX317-36 | 20c Stars & Stripes in 5 sheets of 4 (20) | 59.50 |
| UX337-56 | 20c Legends of Baseball (20) | 35.00 |
| UX357-60 | 20c Christmas Deer (4) | 6.50 |
| UX360a | Christmas Deer, Booklet of 20 | 32.50 |

2001 ISSUES

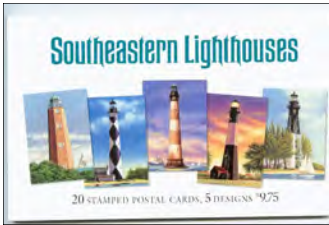
| | | |
|----------|--|-------|
| UX361 | 20c Connecticut Hall, Yale University | .60 |
| UX362 | 20c University of South Carolina | .60 |
| UX363 | 20c Northwestern University Sesquicentennial | .60 |
| UX364 | 20c Waldschmidt Hall, University of Portland | .60 |
| UX365-74 | 21c Legendary Baseball Fields (10) | 39.50 |
| UX375 | 21c White Barn | .65 |
| UX376 | 21c Porky Pig | 1.85 |
| UX376a | 21c Porky Booklet of 10 | 17.50 |
| UX377-80 | 21c Santa Claus (4) | 7.50 |
| UX380a | Santa Claus, Booklet of 20 | 36.50 |

2002 ISSUES

| | | |
|----------|----------------------------------|-------|
| UX381 | 23c Carlsbad Caverns Park | .70 |
| UX382-85 | 23c Teddy Bears (4) | 6.00 |
| UX385a | Teddy Bears, Booklet of 20 | 29.50 |
| UX386-89 | 23c Christmas Snowmen (4) | 6.00 |
| UX389a | Christmas Snowmen, Booklet of 20 | 29.50 |

2003 ISSUES

| | | |
|----------|----------------------------------|-------|
| UX390-94 | 23c Old Glory (5) | 6.00 |
| UX394a | Old Glory, Booklet of 20 | 31.50 |
| UX395-99 | 23c Southeastern Lighthouses (5) | 7.50 |



| | | |
|---------|---|-------|
| UX399a | Southeastern Lighthouses, Booklet of 20 | 29.50 |
| UX400 | 23c Ohio University | .70 |
| UX401-4 | 23c Holiday Music Makers (4) | 6.75 |
| UX404a | Music Makers, Booklet of 20 | 33.50 |

2004 ISSUES

| | | |
|----------|--------------------------------------|-------|
| UX405 | 23c Low Library, Columbia University | .70 |
| UX406 | 23c Harriton House, Bryn Mawr, PA | .70 |
| UX407-10 | 23c Art of Disney, Friendship (4) | 7.25 |
| UX410a | Disney, Booklet of 20 (5each) | 35.75 |
| UX411-20 | 23c Art of American Indians (10) | 20.75 |
| UX420a | Indian Art, Booklet of 20 | 47.50 |
| UX421-35 | 23c Cloudscapes(15) | 39.75 |
| UX435a | Cloudscapes, Booklet of 20 | 44.75 |

2005 ISSUES

| Scott No. | Description | Mint Card |
|-----------|-------------------------------------|-----------|
| UX436-39 | 23¢ Art of Disney, Celebrations (4) | 7.25 |
| UX439a | Disney, Booklet of 20 (5 of each) | 35.75 |
| UX440-44 | 23¢ Sporty Cars (5) | 7.50 |



| | | |
|----------|---|-------|
| UX444a | Sporty Cars, Booklet of 20 (4 of each) | 29.50 |
| UX445-48 | 23¢ Latin Dances (4) | 6.25 |
| UX448a | Latin Dances, Booklet of 20 (5 of each) | 30.75 |

2006 ISSUES

| | | |
|----------|---|-------|
| UX449 | 24¢ Pikes Peak, Zebulon Pike | 70 |
| UX450-53 | 24¢ Art of Disney, Romance (4) | 6.00 |
| UX453a | Disney, Pack of 20 (5 of each) | 29.50 |
| UX454-57 | 24¢ Baseball Sluggers (4) | 6.50 |
| UX457a | Baseball Sluggers, Pack of 20 | 31.50 |
| UX458-77 | 24¢ Comic Book Heroes, Pack of 20 | 52.50 |
| UX478-87 | 39¢ Southern Florida Wetlands, Pack of 10 | 57.50 |

2007 ISSUES

| | | |
|-----------|--|-------|
| UX488 | 26¢ Pineapple | 90 |
| UX489-503 | 26¢ Star Wars, Booklet of 15 | 32.50 |
| UX504-8 | 26¢ Pacific Lighthouses (5) | 7.75 |
| UX508a | Pacific Lighthouses, Booklet of 20 (4 of each) | 30.75 |
| UX509-28 | 26¢ Marvel Comics Pack of 20 | 37.50 |
| UX529-32 | 26¢ Art of Disney, Magic (4) | 8.25 |
| UX532a | Disney, Pack of 20 | 39.50 |

2008 ISSUES

| | | |
|----------|--|-------|
| UX533 | 27¢ Mount St. Mary's University | 95 |
| UX534 | 27¢ Corinthian Column, Capitol Building | 95 |
| UX535-38 | 27¢ Art of Disney, Imagination (4) | 8.25 |
| UX538a | Disney, Pack of 20 | 39.50 |
| UX539-48 | 42¢ Great Lakes Dunes, 5 Sheets of 2 each in Pack of 10 | 24.75 |
| UX549-53 | 27¢ Tail Fins & Chrome (5) | 9.25 |
| UX553a | Tail Fins & Chrome, Booklet of 20 (4 of each) | 35.75 |

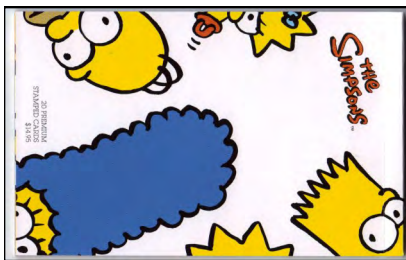
2009 ISSUES



| | | |
|-------|----------------------------|----|
| UX554 | 27¢ Miami University, Ohio | 85 |
|-------|----------------------------|----|



| | | |
|----------|------------------------|------|
| UX555-56 | 28¢ Koi Fish, Set of 2 | 1.70 |
| UX556a | 28¢ Koi Fish Pair | 2.10 |



| | | |
|----------|--|-------|
| UX557-61 | 28¢ The Simpsons (5) | 9.50 |
| UX561a | Simpsons, Booklet of 20 (4 of each) | 37.75 |
| UX562-66 | 28¢ Gulf Coast Lighthouses (5) | 9.50 |
| UX566a | Lighthouses, Booklet of 20 (4 of each) | 37.75 |

| Scott No. | Description | Mint Card |
|-----------|--|-----------|
| UX567-86 | 28c Early Television Memories (20) | 37.75 |

USA FOREVER
 A stamp featuring a scene from the television show "The Dick Van Dyke Show" is shown on a white card. The card is part of a set of 20 cards, each featuring a different scene from the show. The card is numbered 10 in the bottom right corner.

USA FOREVER
 A stamp featuring a scene from the television show "The Dick Van Dyke Show" is shown on a white card. The card is part of a set of 20 cards, each featuring a different scene from the show. The card is numbered 10 in the bottom right corner.



| | | |
|----------|--|-------|
| UX587-96 | 44c Kelp Forest, 5 Sheets of 2 in Pack of 10 | 23.75 |
|----------|--|-------|

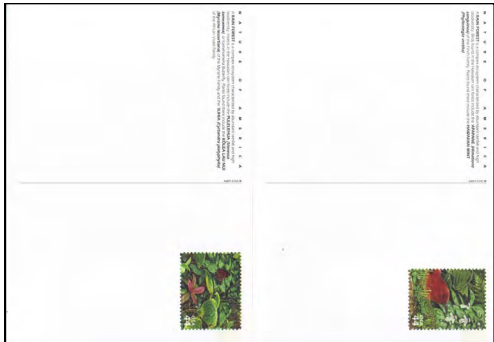
2010 ISSUES

| | | |
|-----------|--|------|
| UX597-600 | 28c Cowboys of the Silver Screen (4) | 8.50 |
|-----------|--|------|

| | | |
|--------|---------------------------------------|-------|
| UX600a | Cowboys, Pack of 20 (5 of each) | 39.50 |
|--------|---------------------------------------|-------|

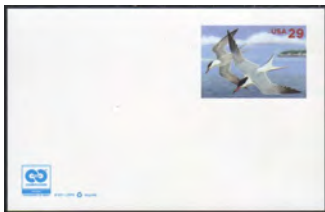
| | | |
|----------|--|-------|
| UX601-10 | 28c Scenic American Landmarks (10) | 19.50 |
|----------|--|-------|

| | | |
|--------|--------------------------------------|-------|
| UX610a | Landmarks, Pack of 20 (2 each) | 37.50 |
|--------|--------------------------------------|-------|



| | | |
|----------|--|-------|
| UX611-20 | 44c Hawaiian Rain Forest, Pack of 10 | 26.75 |
|----------|--|-------|

2011 ISSUES



| | | |
|-------|-----------------------|----|
| UX621 | 29c Common Tern | 85 |
|-------|-----------------------|----|

| | | |
|----------|---|-------|
| UX622-26 | (44c) Pixar Films: Send a Hello (5) | 10.50 |
|----------|---|-------|



| | | |
|--------|---|-------|
| UX626a | Pixar Films, Pack of 20 (4 of each) | 41.50 |
|--------|---|-------|

2012 ISSUES



| | | |
|-------|-----------------------|----|
| UX627 | (32c) Sailboats | 85 |
|-------|-----------------------|----|

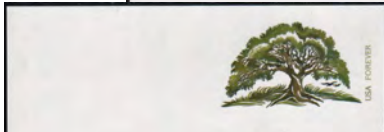


| Scott No. | Description | Mint Card |
|-----------|--|-----------|
| UX628-32 | (45c) Pixar Films, Mail a Smile (5) | 10.75 |
| UX632a | Pixar Films, Pack of 20 (4 of each) | 41.75 |
| UX633 | (32c) Sailboats, Single Card from Sheet of 4 | .90 |
| UX633a | Sailboats, Sheet of 4 Postal Cards | 3.60 |
| UX633v | Sailboats, Pack of 10 Sheets of 4 | 35.00 |
| UX634-43 | (32c) Scenic American Landscapes (10) | 19.75 |



| | | |
|--------|---|-------|
| UX643a | Scenic Landscapes, Pack of 20 (2 of each) | 38.50 |
|--------|---|-------|

2013-15 ISSUES



| | | |
|-------|-------------------------------|-----|
| UX644 | (33c) Golden Deer | .90 |
| UX645 | (34c) Tree (2014) | .85 |
| UX646 | (35c) Fanciful Flowers (2015) | .85 |

AIRMAIL POSTAL CARDS

1949-69 AIRMAIL ISSUES

| | | |
|-------|--|------|
| UXC1 | 4c Eagle in Flight | .70 |
| UXC2 | 5c Eagle in Flight (1958) | 2.35 |
| UXC3 | 5c Eagle, redrawn (1960) | 7.75 |
| UXC4 | 6c Bald Eagle, precancelled (1963) | 1.00 |
| UXC5 | 11c SIPEX, Visit the USA (1966) | .75 |
| UXC6 | 6c Virgin Islands Purchase (1967) | .75 |
| UXC7 | 6c Boy Scouts Jamboree | .75 |
| UXC8 | 13c Travel, Visit the USA | 1.75 |
| UXC9 | 8c Stylized Eagle, precancelled (1968) | .75 |
| UXC9a | 8c Eagle, Tagged (1969) | 2.50 |

1971-74 AIRMAIL ISSUES

| | | |
|-------|---|------|
| UXC10 | 9c Stylized Eagle, precancelled | .60 |
| UXC11 | 15c Travel, Visit the USA | 2.00 |
| UXC12 | 9c Tourism, Grand Canyon (1972) | .75 |
| UXC13 | 15c Tourism, Niagara Falls | .75 |
| UXC14 | 11c Mail Early in the Day, Eagle (1974) | 1.00 |
| UXC15 | 18c Visit USA, Weathervane | 1.10 |

1975-83 AIRMAIL ISSUES

| | | |
|-------|---------------------------------------|------|
| UXC16 | 21c Visit USA, Weathervane | .95 |
| UXC17 | 21c Curtiss Jenny Biplane (1978) | 1.10 |
| UXC18 | 21c Moscow Olympics (1979) | 1.25 |
| UXC19 | 28c First Trans-Pacific Flight (1981) | 1.10 |
| UXC20 | 28c Soaring, Gliders (1982) | 1.10 |
| UXC21 | 28c Speedskating (1983) | 1.10 |

1985-91 AIRMAIL ISSUES

| Scott No. | Description | Mint Card |
|-----------|--------------------------------------|-----------|
| UXC22 | 33c China Clipper Seaplane..... | 2.50 |
| UXC23 | 33c Ameripex'86, Chicago (1986)..... | 1.00 |



| | | |
|-------|---|------|
| UXC24 | 36c DC-3 Airplane (1988)..... | 1.10 |
| UXC25 | 40c Yankee Clipper Airplane (1991)..... | 1.20 |

1999-2001 ISSUES

| | | |
|-------|--|------|
| UXC27 | 55c Mount Rainier, Washington..... | 1.65 |
| UXC28 | 70c Badlands National Park, SD (2001)..... | 2.00 |

POSTAL REPLY CARDS

Unfolded - Deduct 30% for Folded Cards

1892-1904 ISSUES

| Scott No. | Description | Preprinted | Mint |
|-----------|--|------------|-------|
| UY1 | 1c+1c Ulysses S. Grant, Black..... | 18.50 | 60.00 |
| UY1m | 1c Message Half..... | 3.75 | 7.75 |
| UY1r | 1c Reply Half..... | 3.75 | 7.75 |
| UY2 | 2c+2c Liberty Head, Blue (1893)..... | 15.00 | 30.00 |
| UY2m | 2c Message Half..... | 2.25 | 5.00 |
| UY2r | 2c Reply Half..... | 2.25 | 5.00 |
| UY3 | 1c+1c Ulysses S. Grant, No frame (1898)..... | 15.00 | 95.00 |
| UY3m | 1c Message Half..... | 6.75 | 15.00 |
| UY3r | 1c Reply Half..... | 6.75 | 15.00 |
| UY4 | 1c+1c Sherman & Sheridan.(1904)..... | 12.50 | 70.00 |
| UY4m | 1c Sherman Message Half..... | 5.00 | 10.00 |
| UY4r | 1c Sheridan Reply Half..... | 5.00 | 10.00 |

1910-18 ISSUES

| | | | |
|------|--|-------|--------|
| UY5 | 1c+1c Martha and George Washington Double frame, Blue..... | 50.00 | 250.00 |
| UY5m | 1c George, Message Half..... | 10.00 | 15.00 |
| UY5r | 1c Martha, Reply Half..... | 10.00 | 15.00 |
| UY6 | 1c+1c Martha & George Washington, Double frame, Green (1911)..... | 90.00 | 240.00 |
| UY6m | 1c George, Message Half..... | 12.50 | 30.00 |
| UY6r | 1c Martha, Reply Half..... | 12.50 | 30.00 |
| UY7 | 1c+1c G. & M. Washington, Single frame (1915)..... | 75 | 1.65 |
| UY7m | 1c George, Message Half..... | 25 | .35 |
| UY7r | 1c Martha, Reply Half..... | 25 | .35 |
| UY8 | 2c+2c Martha/George Washington, Red (1918). .. | 35.00 | 140.00 |
| UY8m | 2c George, Message Half..... | 11.00 | 30.00 |
| UY8r | 2c Martha, Reply Half..... | 11.00 | 30.00 |

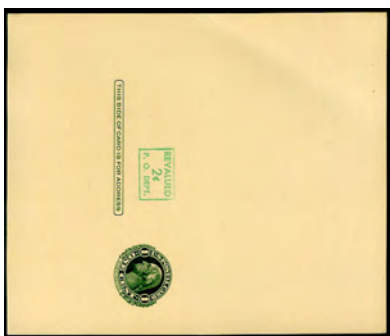
1920-26 ISSUES

| | | | |
|-------|---|--------|--------|
| UY9 | 1c on 2c+1c on 2c Martha and George Washington, Red (UY8)..... | 13.50 | 30.00 |
| UY9m | 1c on 2c George, Message Half..... | 3.25 | 6.50 |
| UY9r | 1c on 2c Martha, Reply Half..... | 3.25 | 6.50 |
| UY10 | 1c on 2c+1c on 2c Martha & George Washington, One Press printed Type (UY8).... | 195.00 | 500.00 |
| UY10m | 1c on 2c George, Message Half..... | 50.00 | 90.00 |
| UY10r | 1c on 2c Martha, Reply Half..... | 50.00 | 90.00 |
| UY11 | 2c+ 2c Liberty Head, Red (1924)..... | 1.75 | 3.50 |
| UY11m | 2c Message Half..... | .50 | 1.00 |
| UY11r | 2c Reply Half..... | .50 | 1.00 |
| UY12 | 3c+3c William McKinley (1926)..... | 7.75 | 16.50 |
| UY12m | 3c Message Half..... | 1.60 | 3.75 |
| UY12r | 3c Reply Half..... | 1.60 | 3.75 |

1951-52 ISSUES



| | | | |
|-------|--|------|------|
| UY13 | 2c+2c Martha & George Washington, Carmine..... | 1.00 | 2.50 |
| UY13m | 2c George, Message Half..... | .30 | .45 |
| UY13r | 2c Martha, Reply Half..... | .30 | .45 |



| Scott No. | Description | Preprinted | Mint |
|-----------|---|------------|--------|
| UY14 | 2¢ on 1¢+2¢ on 1¢ Martha & George Washington Light green Surcharge.(UY7) (1952)..... | 90 | 2.25 |
| UY14m | 2¢ on 1¢ George, Message Half | 35 | .50 |
| UY14r | 2¢ on 1¢ Martha, Reply Half | 35 | .50 |
| UY15 | 2¢ on 1¢+2¢ on 1¢ M.&G. Washington, Dark green Surcharge (1952)..... | 50.00 | 165.00 |
| UY15m | 2¢ on 1¢ Message | 10.00 | 20.00 |
| UY15r | 2¢ on 1¢ Reply | 10.00 | 20.00 |

1956-58 ISSUES

| Scott No. | Description | Mint Card |
|-----------|-------------------------------|-----------|
| UY16 | 4¢+4¢ Statue of Liberty | 1.50 |
| UY16m | 4¢ Message Half | .50 |
| UY16r | 4¢ Reply Half..... | .50 |
| UY17 | 3¢+3¢ Statue of Liberty | 5.00 |

1962-68 ISSUES

| | | |
|-------|--|-------|
| UY18 | 4¢+4¢ Abraham Lincoln..... | 5.75 |
| UY18a | 4¢+4¢ Abraham Lincoln, Tagged (1967) | 11.00 |
| UY19 | 7¢+7¢ "USA" & Map (1963)..... | 3.50 |
| UY19m | 7¢ Message Half | 1.25 |
| UY19r | 7¢ Reply Half..... | 1.25 |
| UY20 | 8¢+8¢ "USA" & Map (1967)..... | 3.75 |
| UY20m | 8¢ Message Half | 1.25 |
| UY20r | 8¢ Reply Half..... | 1.25 |
| UY21 | 5¢+5¢ Abraham Lincoln (1968)..... | 2.00 |

1971-75 ISSUES

| | | |
|------|-----------------------------------|------|
| UY22 | 6¢+6¢ Paul Revere | 1.35 |
| UY23 | 6¢+6¢ John Hanson (1972)..... | 1.50 |
| UY24 | 8¢+8¢ Samuel Adams (1973)..... | 1.25 |
| UY25 | 7¢+7¢ Charles Thomson (1975)..... | 1.25 |
| UY26 | 9¢+9¢ John Witherspoon..... | 1.50 |

1976-78 ISSUES

| | | |
|------|------------------------------------|-------|
| UY27 | 9¢+9¢ Ceasar Rodney..... | 1.25 |
| UY28 | 9¢+9¢ Nathan Hale (1977) | 1.40 |
| UY29 | (10¢+10¢) John Hancock (1978)..... | 10.00 |
| UY30 | 10¢+10¢ John Hancock..... | 1.50 |

1981 ISSUES

| | | |
|------|-------------------------------|------|
| UY31 | (12¢+12¢) Cutter "Eagle"..... | 1.50 |
| UY32 | 12¢+12¢ Isaiah Thomas | 5.25 |
| UY33 | (13¢+13¢) Robert Morris | 2.50 |
| UY34 | 13¢+13¢ Robert Morris..... | 1.65 |

1985-88 ISSUES

| | | |
|------|---------------------------------------|------|
| UY35 | (14¢+14¢) Charles Carroll | 3.50 |
| UY36 | 14¢+14¢ Charles Carroll..... | 1.75 |
| UY37 | 14¢+14¢ George Wythe | 1.65 |
| UY38 | 14¢+14¢ U.S. Flag (1987) | 1.60 |
| UY39 | 15¢+15¢ America, Prairie (1988) | 1.65 |

1991-2002 ISSUES

| | | |
|------|---|------|
| UY40 | 19¢+19¢ Flag | 1.50 |
| UY41 | 20¢+20¢ Red Barn (1995)..... | 1.50 |
| UY42 | 20¢+20¢ Block Island Lighthouse (1999)..... | 1.50 |
| UY43 | 21¢+21¢ White Barn (2001) | 1.60 |
| UY44 | 23¢+23¢ Carlsbad Caverns (2002) | 1.60 |

2006-9 ISSUES

| | | |
|------|--------------------------------|------|
| UY45 | 24¢+24¢ Pikes Peak..... | 1.65 |
| UY46 | 26¢+26¢ Pineapple (2007) | 1.80 |



| | | |
|------|---|------|
| UY47 | 27¢+27¢ Corinthian Column (2008)..... | 1.70 |
| UY48 | 28¢+28¢ Koi Fish, 2 Designs (2009)..... | 1.70 |

2011-15 ISSUES



| Scott No. | Description | Mint Card |
|-----------|----------------------------|-----------|
| UY49 | 29¢+29¢ Common Tern (2011) | 1.70 |
| UY50 | (32¢+32¢) Sailboats (2012) | 1.70 |



| | | |
|------|-------------------------------------|------|
| UY51 | (33¢)+(33¢) Golden Deer (2013) | 1.80 |
| UY52 | (34¢)+(34¢) Tree (2014) | 1.70 |
| UY53 | (35¢)+(35¢) Fanciful Flowers (2015) | 1.70 |

OFFICIAL POSTAL CARDS

1913 OFFICIAL MAIL

| | | |
|-----|-----------------------|--------|
| UZ1 | 1¢ Circle, Preprinted | 750.00 |
|-----|-----------------------|--------|

1983-95 OFFICIAL ISSUES



| | | |
|-----|------------------------------|------|
| UZ2 | 13¢ Great Seal Emblem | 90 |
| UZ3 | 14¢ Great Seal Emblem (1985) | 90 |
| UZ4 | 15¢ Great Seal Emblem (1988) | 90 |
| UZ5 | 19¢ Great Seal Emblem (1991) | 1.00 |
| UZ6 | 20¢ Great Seal Emblem (1995) | 1.00 |