

WHAT'S NEW IN U.S. STAMPS

Latest New Issue Information

Information and prices on newest issues are tentative & subject to change.
Plate Blocks have 4 stamps unless otherwise noted in (. VF = Very Fine; F = Fine



2016 LOVE SPECIAL ISSUE

| Scott No. | Description | Mint Sheet Size | | Plate Block | | Mint Single | |
|-----------|--------------------------------|-----------------|-------|-------------|------|-------------|------|
| | | F-VF | F-VF | VF | F-VF | VF | F-VF |
| 5036 | (49c) Quilted Paper Heart..... | 20 | 19.50 | 5.75 | 4.65 | 1.25 | 1.00 |

2016 FRUIT REGULAR ISSUE COILS

| Scott No. | Description | Plate Strip-5 | | Plate Strip-3 | | Mint Single | |
|-----------|--------------------|---------------|------|---------------|------|-------------|------|
| | | VF | F-VF | VF | F-VF | VF | F-VF |
| 5037 | 1c Apples | 1.80 | 1.40 | 1.60 | 1.25 | .30 | .20 |
| 5038 | 5c Grapes..... | 2.50 | 2.00 | 2.00 | 1.60 | .35 | .25 |
| 5039 | 10c Red Pears..... | 2.80 | 2.25 | 2.20 | 1.75 | .35 | .25 |

2016 AMERICAN LANDMARKS REGULAR ISSUES



| Scott No. | Description | Mint Sheet Size | | Plate Block | | Mint Single | |
|-----------|---|-----------------|--------|-------------|--------|-------------|-------|
| | | F-VF | F-VF | VF | F-VF | VF | F-VF |
| 5040 | \$6.45 La Cueva del Indio, Priority Mail..... | 10 | 127.50 | 70.00 | 57.50 | 16.00 | 13.00 |
| 5041 | \$22.95 Columbia River Gorge | 10 | 450.00 | 250.00 | 200.00 | 56.50 | 45.75 |

2016 U.S. BOTANICAL ART REGULAR ISSUES



| | | | |
|---------|---|-------|-------|
| 5042-51 | (49c) Botanical Art, Singles from Convertible Pane of 10 or 20 (10) | 12.00 | 9.75 |
| 5042-51 | (49c) Botanical Art, Block of 10 from DS Convertible Pane of 20 .. | 15.00 | 12.00 |
| 5051b | (49c) Botanical Art Convertible Pane of 10.. | 12.00 | 9.75 |
| 5051c | (49c) Botanical Art Double-sided Convertible Pane of 20 .. | 24.00 | 19.50 |



2016 U.S. FLAG REGULAR ISSUES

| Scott No. | Description | Plate Strip-5 | | Plate Strip-3 | | Mint Single | |
|-----------|---|---------------|------|---------------|------|-------------|-------|
| | | VF | F-VF | VF | F-VF | VF | F-VF |
| 5052 | (49c) U.S. Flag Coil, Die-cut 11 Vert. . | 11.00 | 9.00 | 8.75 | 7.00 | 1.25 | 1.00 |
| 5053 | (49c) U.S. Flag Coil, Die-cut 9 1/2 Vert. . | 11.00 | 9.00 | 8.75 | 7.00 | 1.25 | 1.00 |
| 5054 | (49c) U.S. Flag Convertible. Pane Single from Pane of 10 or 20 .. | .. | .. | .. | .. | 1.25 | 1.00 |
| 5054a | (49c) U.S. Flag Convertible Pane of 10 | .. | .. | .. | .. | 12.00 | 9.75 |
| 5054b | (49c) U.S. Flag Double-sided Convertible Pane of 20 .. | .. | .. | .. | .. | 24.00 | 19.50 |
| 5055 | (49c) U.S. Flag Convertible Pane Single from Pane of 20 .. | .. | .. | .. | .. | 1.25 | 1.00 |
| 5055a | (49c) U.S. Flag Double-sided Convertible Pane of 20 .. | .. | .. | .. | .. | 24.00 | 19.50 |

#5052,54 Micro-printed "USPS" to right of pole under flag.

#5053,55 Micro-printed "USPS" on second white flag stripe.

2016 COMMEMORATIVES

| | | | | | |
|-----------|--|-------|-------|-------|-------|
| 5056/5153 | 2016 Commemoratives #5056-57,59-60,62-76, 5091-92,5100,5,32,35,41-42,49-53 (34) (12 Pl.Blocks) | 75.00 | 61.50 | 39.00 | 31.75 |
| 5056 | (49c) Richard Allen, Black Heritage..... | 20 | 19.50 | 5.75 | 4.65 |
| 5057 | (49c) Year of the Monkey | 12 | 11.75 | .. | .. |



2016 GLOBAL REGULAR ISSUE

| Scott No. | Description | Mint Sheet | | Plate Block | | Mint Single | |
|--|---|------------|-------|-------------|-------|-------------|------|
| | | Size | F-VF | VF | F-VF | VF | F-VF |
| 5058 | (\$1.20) Moon, Global Forever..... | 10 | 23.75 | 16.75 | 13.50 | 3.00 | 2.40 |
| 2016 COMMEMORATIVES (continued) | | | | | | | |
| 5059 | (49¢) Sarah Vaughn, Music Icons..... | 16 | 15.75 | .. | .. | 1.25 | 1.00 |
| 5060 | (49¢) Shirley Temple, Legends of Hollywood..... | 20 | 19.50 | 5.75 | 4.65 | 1.25 | 1.00 |

2016 NON-PROFIT COIL ISSUE

| Scott No. | Description | Plate Strip-5 | | Plate Strip-3 | | Mint Single | |
|-----------|-------------------------|---------------|------|---------------|------|-------------|------|
| | | VF | F-VF | VF | F-VF | VF | F-VF |
| 5061 | (5¢) USA Star Coil..... | 2.50 | 2.00 | 2.00 | 1.60 | .35 | .25 |

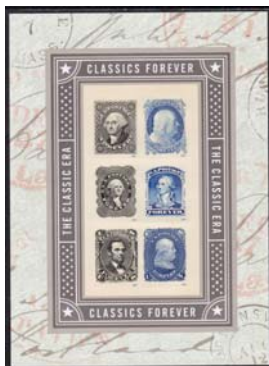
2016 COMMEMORATIVES (continued)



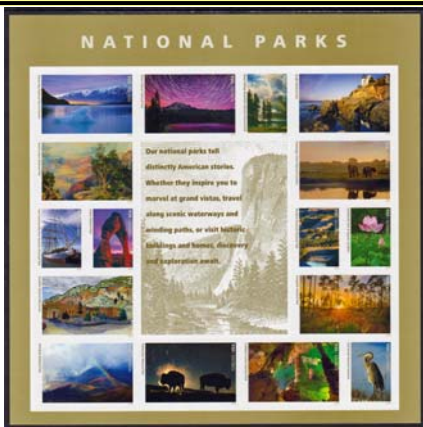
| Scott No. | Description | Mint Sheet | | Plate Block | | Mint Single | |
|-----------|--|------------|------|-------------|------|-------------|------|
| | | Size | F-VF | VF | F-VF | VF | F-VF |
| 5062-63 | (47¢) World Stamp Show NY 2016, Set of 2 (Gutter Pair) | 4.50 | 3.60 | 2.35 | 1.90 | .. | .. |
| 5062-63 | (47¢) World Stamp S. Folio of 24 (12 each). | 22.50 | .. | .. | .. | .. | .. |
| 5064 | (47¢) Repeal of Stamp Act 1766..... | 10 | 9.35 | .. | .. | 1.15 | .95 |



| | | | | | | | |
|---------|--|----|-------|-----|-------|------|------|
| 5065-68 | (47¢) Service Cross Medals, Strip or Horizontal Block of 4 | 12 | 11.25 | .. | .. | 4.75 | 3.80 |
| 5069-76 | (47¢) View of Our Planets, Block of 8..... | 16 | 14.85 | (8) | 10.25 | 8.25 | 9.35 |



| | | | | | |
|-------|--|----|----|------|------|
| 5078a | (47¢) Pluto Explored Souvenir Sheet of 4 (2 each design) | .. | .. | 4.75 | 3.80 |
| 5079 | (47¢) Classic U.S. Stamps Souvenir Sheet of 6 | .. | .. | 7.00 | 5.65 |



| Scott No. | Description | Mint Sheet Size | | Plate Block | | Mint Single | |
|-----------|--|-----------------|----|-------------|------|-------------|-------|
| | | F | VF | VF | F-VF | VF | F-VF |
| 5080 | (47c) U.S. National Parks Centennial Sheet of 16 .. | .. | .. | .. | .. | 18.50 | 14.85 |
| 5081-90 | (47c) Colorful Celebrations, Set of 10 Convertible Pane Singles .. | .. | .. | .. | .. | 11.75 | 9.50 |
| 5081-90 | (47c) Colorful Celebrations, Block of 10 from Convertible Pane .. | .. | .. | .. | .. | 13.75 | 11.00 |
| 5090b | (47c) Colorful Celebrations Double-sided Convertible Pane of 20 .. | .. | .. | .. | .. | 23.00 | 18.50 |



| | | | | | | | |
|------|-------------------------------|----|-------|------|------|------|-----|
| 5091 | (47c) Indiana Statehood | 20 | 18.50 | 5.35 | 4.35 | 1.15 | .95 |
| 5092 | (47c) Eid Greeting | 20 | 18.50 | 5.35 | 4.35 | 1.15 | .95 |



| | | | | | | | |
|---------|---|----|----|----|----|-------|-------|
| 5093-97 | (47c) Soda Fountain Favorites Strip of 5 from Convertible Pane .. | .. | .. | .. | .. | 6.25 | 5.00 |
| 5093/97 | (47c) Die-cut Variety #5093-4,95a,96-7 Strip of 5 from Convertible Pane | .. | .. | .. | .. | 6.25 | 5.00 |
| 5097c | (47c) Soda Fountain Favorites Convertible Pane of 20 .. | .. | .. | .. | .. | 23.00 | 18.50 |

#5095 Banana Split - Normal die-cutting. 1st and 3rd row.
 #5095a Long sloping die-cut at top center. 2nd and 4th row.

2016 STAR QUILT COIL REGULAR ISSUE

| Scott No. | Description | Plate Strip-5 | | Mint Single | |
|-----------|-----------------------------------|---------------|------|-------------|------|
| | | VF | F-VF | VF | F-VF |
| 5098-99 | (25c) Star Quilts Coil Pair | 5.00 | 4.00 | 1.25 | 1.00 |

2016 COMMEMORATIVES (continued)



| Scott No. | Description | Mint Sheet Size | | Plate Block | | Mint Single | |
|-----------|---|-----------------|-------|-------------|------|-------------|-------|
| | | F | VF | VF | F-VF | VF | F-VF |
| 5100 | (47c) Jaime Escalante, Educator | 20 | 18.50 | 5.35 | 4.35 | 1.15 | .95 |
| 5101-4 | (47c) Pickup Trucks, Block of 4 from Convertible Pane .. | .. | .. | .. | .. | 4.75 | 3.80 |
| 5101-4 | (47c) Pickup Trucks Double-sided Block of 4 (8 stamps) .. | .. | .. | .. | .. | 9.50 | 7.60 |
| 5104b | (47c) Pickup Trucks Convertible Pane of 20 .. | .. | .. | .. | .. | 23.00 | 18.50 |
| 5105 | (89c) Henry James, Literary Art | 20 | 35.00 | 9.65 | 7.75 | 2.25 | 1.80 |

2016 REGULAR ISSUE CONVERTIBLE PANES OF 20



| Scott No. | Description | Mint Sheet Size | F-VF | Plate Block VF | F-VF | Mint Single VF | F-VF |
|-----------|---|-----------------|------|----------------|------|----------------|-------|
| 5125a | (47c) Pets DS Convertible Pane of 20..... | .. | .. | .. | .. | 23.00 | 18.50 |



| | | | | | | | |
|---------|---|----|----|----|----|-------|-------|
| 5126-29 | (47c) Songbirds in Snow, Block of 4 from Convertible Pane | .. | .. | .. | .. | 4.75 | 3.80 |
| 5129b | (47c) Songbirds in Snow DS Convertible Pane of 20 | .. | .. | .. | .. | 23.00 | 18.50 |

2016 PATRIOTIC SPIRAL REGULAR ISSUES

| Scott No. | Description | Plate Strip-5 | | Plate Strip-3 | | Mint Single | |
|-----------|--|-----------------|------|---------------|------|-------------|------|
| | | VF | F-VF | VF | F-VF | VF | F-VF |
| 5130 | (47c) Patriotic Spiral Coil..... | 11.00 | 9.00 | 8.50 | 7.00 | 1.15 | .95 |
| Scott No. | Description | Mint Sheet Size | | Plate Block | | Mint Single | |
| | | Size | F-VF | VF | F-VF | VF | F-VF |
| 5131 | (47c) Patriotic Spiral Convertible Pane Single | .. | .. | .. | .. | 1.15 | .95 |
| 5131a | (47c) Patriotic Spiral Convertible Pane of 10 | .. | .. | .. | .. | 11.25 | .95 |

2016 COMMEMORATIVES (continued)

| | | | | | | | |
|---------|--|----|-------|------|------|------|------|
| 5132-35 | (47c) Star Trek Block or Vt. Strip of 4..... | 20 | 18.50 | 5.35 | 4.35 | 4.75 | 3.80 |
| 5136 | (68c) Eastern Tailed-Blue Butterfly..... | 20 | 27.50 | 7.75 | 6.25 | 1.75 | 1.40 |

2016 COMMEMORATIVES (continued)



| | | | | | | | |
|---------|---|----|-------|------|------|-------|-------|
| 5137-40 | (47c) Jack-O'-Lanterns Convertible Pane Block of 4 | .. | .. | .. | .. | 4.75 | 3.80 |
| 5137-40 | (47c) Jack-O'-Lanterns Double-sided Block of 4 (8 stamps) | .. | .. | .. | .. | 9.50 | 7.60 |
| 5140b | (47c) Jack-O'-Lanterns DS Convertible Pane of 20 | .. | .. | .. | .. | 23.00 | 18.50 |
| 5141 | (47c) Kwanzaa | 20 | 18.50 | 5.35 | 4.35 | 1.15 | .95 |
| 5142 | (47c) Diwali, Hindu Festival | 20 | 18.50 | 5.35 | 4.35 | 1.15 | .95 |
| 5143 | (47c) Madonna and Child Convertible Pane Single | .. | .. | .. | .. | 1.15 | .95 |
| 5143 | (47c) Madonna and Child Double-sided Single (2 stamps) | .. | .. | .. | .. | 2.30 | 1.90 |
| 5143a | (47c) Madonna and Child DS Convertible Pane of 20 | .. | .. | .. | .. | 23.00 | 18.50 |
| 5144 | (47c) Nativity Convertible Pane Single | .. | .. | .. | .. | 1.15 | .95 |
| 5144 | (47c) Nativity Double-sided Single (2 stamps) | .. | .. | .. | .. | 2.30 | 1.90 |
| 5144a | (47c) Nativity Double-sided Convertible Pane of 20 | .. | .. | .. | .. | 23.00 | 18.50 |



| Scott No. | Description | Mint Sheet Size | | Plate Block | | Mint Single | |
|-----------|---|-----------------|----------|-------------|------|-------------|-------|
| | | F-VF | F-VF | VF | F-VF | VF | F-VF |
| 5145-48 | (47c) Holiday Window Views Block of 4 from Convertible Pane | .. | .. | .. | .. | 4.75 | 3.80 |
| 5145-48 | (47c) Holiday Window Views Double-sided Block of 4 (8 stamps) | .. | .. | .. | .. | 9.50 | 7.60 |
| 5148b | (47c) Holiday Window Views DS Convertible Pane of 20 | .. | .. | .. | .. | 23.00 | 18.50 |
| 5149-52 | (47c) Wonder Woman, Vert. Strip of 4.....20 | 18.50 | (8)10.65 | 8.65 | .. | 4.75 | 3.80 |
| 5153 | (47c) Hanukkah.....20 | 18.50 | 5.35 | 4.35 | .. | 1.15 | .95 |



2017 COMMEMORATIVES

| | | | | | | | |
|--------------------------------|----------------------------------|-------|------|------|----|------|-----|
| 5154 | (47c) Year of the Rooster.....12 | 11.00 | .. | .. | .. | 1.15 | .95 |
| 2017 LOVE SPECIAL ISSUE | | | | | | | |
| 5155 | (47c) Love Skywriting.....20 | 18.50 | 5.35 | 4.35 | .. | 1.15 | .95 |



2017 AMERICAN LANDMARKS REGULAR ISSUES

| | | | | | | | |
|------|---|--------|----|----|----|-------|-------|
| 5156 | \$6.65 Lili'uokalani Gardens, Priority Mail...4 | 52.50 | .. | .. | .. | 16.50 | 13.25 |
| 5157 | \$22.75 Gateway Arch, P. Mail Express.....4 | 175.00 | .. | .. | .. | 55.00 | 45.00 |

2017 U.S. FLAG REGULAR ISSUES

| Scott No. | Description | Plate Strip-5 | | Plate Strip-3 | | Mint Single | |
|-----------|---|---------------|------|---------------|------|-------------|-------|
| | | VF | F-VF | VF | F-VF | VF | F-VF |
| 5158 | (49c) U.S. Flag Coil, DC 11 Vert.....11.00 | 9.00 | .. | 8.75 | 7.00 | 1.25 | 1.00 |
| 5159 | (49c) U.S. Flag Coil, DC 9½ Vert.....11.00 | 9.00 | .. | 8.75 | 7.00 | 1.25 | 1.00 |
| 5160 | (49c) U.S. Flag Convertible Pane Single..... | .. | .. | .. | .. | 1.25 | 1.00 |
| 5160 | (49c) U.S. Flag DS Singles (2 stamps) from Convertible Pane of 20.. | .. | .. | .. | .. | 2.50 | 2.00 |
| 5160a | (49c) U.S. Flag Convertible Pane of 10..... | .. | .. | .. | .. | 12.00 | 9.75 |
| 5160b | (49c) U.S. Flag DS Convertible Pane of 20.. | .. | .. | .. | .. | 24.00 | 19.50 |
| 5161 | (49c) U.S. Flag Convertible Pane Single..... | .. | .. | .. | .. | 1.25 | 1.00 |
| 5161 | (49c) U.S. Flag DS Singles (2 stamps) from Convertible Pane of 20.. | .. | .. | .. | .. | 2.50 | 2.00 |
| 5161a | (49c) U.S. Flag DS Convertible Pane of 20.. | .. | .. | .. | .. | 24.00 | 19.50 |
| 5162 | (49c) U.S. Flag Single from ATM Pane of 18 | .. | .. | .. | .. | 1.35 | 1.10 |
| 5162a | (49c) U.S. Flag ATM Pane of 18..... | .. | .. | .. | .. | 23.50 | 19.00 |

#5158,60 Microprinted "USPS" on right end of fourth white flag stripe.
 #5159,61 Microprinted "USPS" on right end of second white flag stripe.
 #5162 Microprinted "USPS" on left end of second white flag stripe near blue field.



2017 SEASHELLS REGULAR ISSUE

| Scott No. | Description | Mint Sheet Size | | Plate Block | | Mint Single | |
|-----------|--|-----------------|---------|-------------|------|-------------|------|
| | | F-VF | F-VF | VF | F-VF | VF | F-VF |
| 5163-66 | (34c) Seashells, Strip of 4.....20 | 13.50 | (8)7.50 | 6.00 | .. | 3.50 | 2.80 |
| 5167-70 | (34c) Seashells, Coil Strip of 4.....11.00 | 8.75 | 7.50 | 6.00 | .. | 3.50 | 2.80 |

2017 COMMEMORATIVES (continued)

| Scott No. | Description | Mint Sheet Size | | Plate Block | | Mint Single | |
|-----------|---|-----------------|------|-------------|------|-------------|------|
| | | F-VF | F-VF | VF | F-VF | VF | F-VF |
| 5171 | (49c) Dorothy Height, Black Heritage.....20 | 19.50 | 5.75 | 4.65 | .. | 1.25 | 1.00 |

2017 USA STAR REGULAR ISSUE COIL

| Scott No. | Description | Plate Strip-5 | | Plate Strip-3 | | Mint Single | |
|-----------|-----------------------------|---------------|------|---------------|------|-------------|------|
| | | VF | F-VF | VF | F-VF | VF | F-VF |
| 5172 | (5c) USA Star Coil.....2.50 | 2.00 | 2.00 | 1.60 | .. | .35 | .25 |

2017 COMMEMORATIVES (continued)



| Scott No. | Description | Mint Sheet | | Plate Block | | Mint Single | |
|-----------|---|------------|------|-------------|------|-------------|-------|
| | | Size | F-VF | VF | F-VF | VF | F-VF |
| 5173 | (49¢) Oscar de la Renta Miniature Sheet of 11 | .. | .. | .. | .. | 13.25 | 10.75 |



2017 REGULAR ISSUE

| | | | | | | | |
|------|----------------------------|----|------|------|------|-----|-----|
| 5174 | (21¢) Uncle Sam's Hat..... | 20 | 8.75 | 2.75 | 2.20 | .55 | .45 |
|------|----------------------------|----|------|------|------|-----|-----|

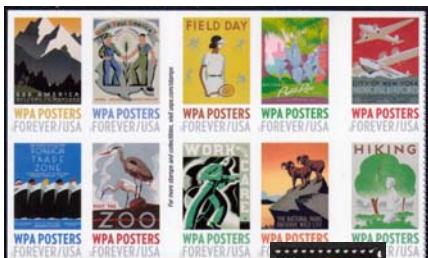
2017 COMMEMORATIVES (continued)

| | | | | | | | |
|------|----------------------------|----|-------|------|------|------|------|
| 5175 | (49¢) John F. Kennedy..... | 12 | 11.50 | 5.75 | 4.65 | 1.25 | 1.00 |
|------|----------------------------|----|-------|------|------|------|------|

2017 REGULAR ISSUE

| Scott No. | Description | Mint Sheet | | Plate Block | | Mint Single | |
|-----------|-----------------------------------|------------|------|-------------|------|-------------|------|
| | | Size | F-VF | VF | F-VF | VF | F-VF |
| 5177 | 5¢ Grapes (Design of #5038) | 20 | 4.00 | 1.55 | 1.25 | .35 | .25 |
| 5178 | 10¢ Pears (Design of #5039)..... | 20 | 6.00 | 1.55 | 1.25 | .35 | .25 |

2017 COMMEMORATIVES (continued)



| | | | | | | | |
|---------|--|----|-------|------|------|-------|-------|
| 5179 | (49¢) Nebraska Statehood..... | 20 | 19.50 | 5.75 | 4.65 | 1.25 | 1.00 |
| 5180-89 | (49¢) WPA (Works Progress Administration) Posters, Set of 10 from C.P. | .. | .. | .. | .. | 12.50 | 10.00 |
| 5180-89 | (49¢) WPA Posters Block of 10 from Convertible Pane of 20 | .. | .. | .. | .. | 15.50 | 12.50 |
| 5189b | (49¢) WPA Posters DS Convertible Pane of 20 | .. | .. | .. | .. | 24.00 | 19.50 |
| 5190 | (49¢) Mississippi Statehood..... | 20 | 19.50 | 5.75 | 4.65 | 1.25 | 1.00 |
| 5191 | (70¢) Robert Panara, Deaf Culture | 20 | 27.50 | 7.75 | 6.25 | 1.75 | 1.40 |
| 5192-97 | (49¢) Delicioso, Latin American Foods and Flavors, Set of 6 from C.P. | .. | .. | .. | .. | 7.75 | 6.25 |
| 5192-97 | (49¢) Delicioso Block of 6 from Convertible Pane of 20 | .. | .. | .. | .. | 7.75 | 6.25 |
| 5197b | (49¢) Delicioso Double-sided Convertible Pane of 20 | .. | .. | .. | .. | 24.00 | 19.50 |



2017 REGULAR ISSUE

| Scott No. | Description | Mint Sheet | | Plate Block | | Mint Single | |
|-----------|---|------------|-------|-------------|-------|-------------|------|
| | | Size | F-VF | VF | F-VF | VF | F-VF |
| 5198 | (\$1.15) Green Succulent Global Forever | 10 | 22.50 | 13.00 | 10.50 | 2.85 | 2.30 |

2017 CELEBRATION SPECIAL ISSUE

| | | | | | | | |
|------|-------------------|----|-------|------|------|------|------|
| 5199 | (49¢) Boutonniere | 20 | 19.50 | 5.75 | 4.65 | 1.25 | 1.00 |
| 5200 | (70¢) Corsage | 20 | 27.50 | 7.75 | 6.25 | 1.75 | 1.40 |

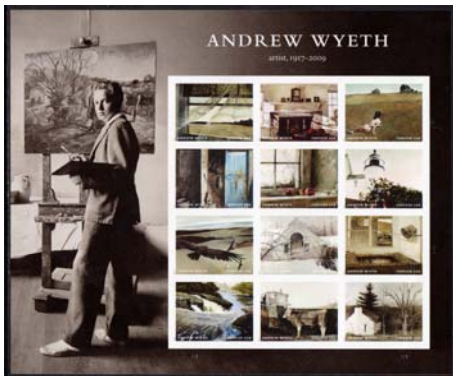
2017 REGULAR ISSUE COIL

| Scott No. | Description | Plate Strip-5 | | Plate Strip-3 | | Mint Single | |
|-----------|----------------------|---------------|------|---------------|------|-------------|------|
| | | VF | F-VF | VF | F-VF | VF | F-VF |
| 5201 | 3¢ Strawberries Coil | 2.00 | 1.65 | 1.55 | 1.25 | .35 | .25 |

2017 COMMEMORATIVES (continued)



| Scott No. | Description | Mint Sheet | | Plate Block | | Mint Single | |
|-----------|---|------------|-------|-------------|------|-------------|------|
| | | Size | F-VF | VF | F-VF | VF | F-VF |
| 5202 | (49¢) Henry David Thoreau | 20 | 19.50 | 5.75 | 4.65 | 1.25 | 1.00 |
| 5203-10 | (49¢) Have a Ball! Sports Balls Block-8 | 16 | 15.75 | (8) 11.00 | 9.00 | 10.00 | 8.00 |
| 5211 | (49¢) Total Eclipse of the Sun | 16 | 15.75 | 5.75 | 4.65 | 1.25 | 1.00 |



(49¢) Andrew Wyeth, Realist Painter 12 15.00 12.00



(49¢) Disney Villains Block of 10 20 19.50 (10) 13.50 11.00 12.50 10.00



(49¢) Sharks, Set of 5 20 19.50 (10) 13.50 11.00 6.25 5.00
 (49¢) Protect Pollinators, Set of 5 20 19.50 (10) 13.50 11.00 6.25 5.00

2017 FLOWERS FROM THE GARDEN REGULAR ISSUES

| Scott No. | Description | Plate Strip-9 | | Plate Strip-5 | | Mint Single | |
|-----------|---|---------------|-------|---------------|------|-------------|-------|
| | | VF | F-VF | VF | F-VF | VF | F-VF |
| .. | (49¢) Flowers-Garden Coil Strip of 4 .. | 15.50 | 12.50 | 10.50 | 8.50 | 5.00 | 4.00 |
| .. | (49¢) Flowers-Garden Block of 4 from Convertible Pane | .. | .. | .. | .. | 5.00 | 4.00 |
| .. | (49¢) Flowers-Garden Double-sided Block of 4 (8 stamps) | .. | .. | .. | .. | 10.00 | 8.00 |
| .. | (49¢) Flowers-Garden DS Convertible Pane of 20.. | .. | .. | .. | .. | 24.00 | 19.50 |

2017 COMMEMORATIVES (continued)

| Scott No. | Description | Mint Sheet | | Plate Block | | Mint Single | |
|-----------|---------------------------------|------------|-------|-------------|------|-------------|------|
| | | Size | F-VF | VF | F-VF | VF | F-VF |
| .. | (49¢) Father Ted Hesburgh | 20 | 19.50 | 5.75 | 4.65 | 1.25 | 1.00 |

Listings for 2017 issues are tentative and subject to change.